

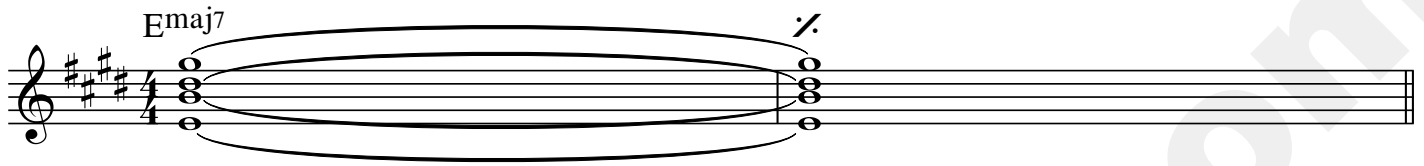
# Techno Show

Peach Pit  
Lead Guitar

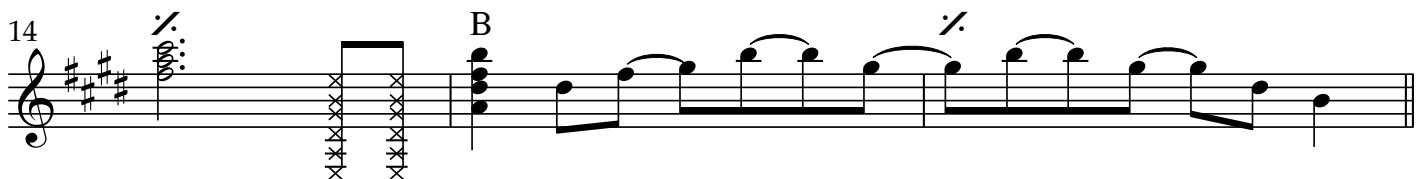
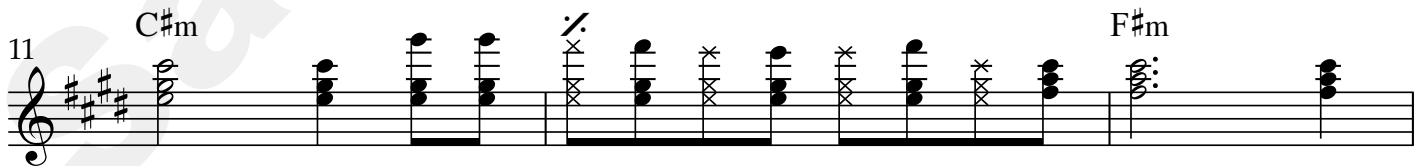
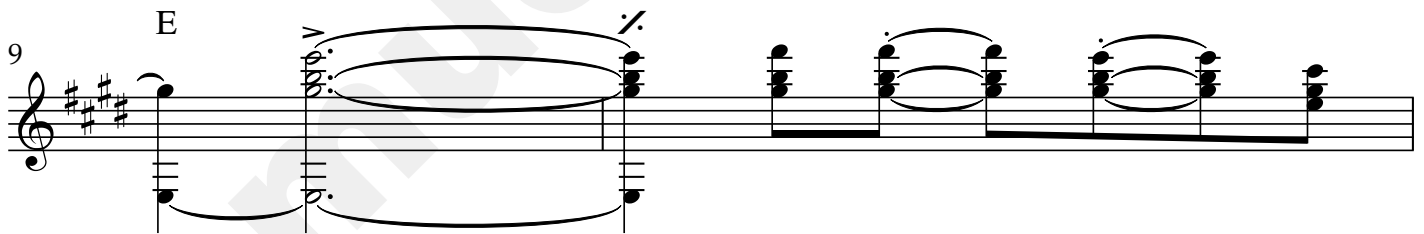
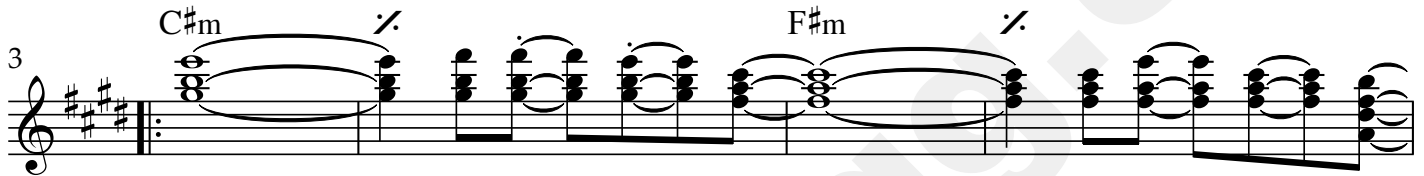
♩=93

Trans. Samuel Rugg

Intro



Verse



2 Vocal Chorus

A  $\text{G}\sharp\text{m}$

17

$\text{C}\sharp\text{m}$  B  $\text{C}\sharp\text{m}$

21

A

23

$\text{G}\sharp\text{m}$   $\text{C}\sharp\text{m}$

25

A  $\text{G}\sharp\text{m}$   $\text{G}\sharp\text{m}$  B

29

Instrumental Chorus

3

33

E

C#m

37

F#m

B

41

1. E

C#m

45

F#m

B

49

Emaj7

4 2.  
E C#m

51

Musical staff 51-54 in treble clef, key of D major (F# C# G# D). Staff 51 starts with a measure of E (D4-F#4-A4) and C#m (D4-F#4-A4). Staff 52-54 continue with various chords and melodic lines, including F#m (D4-F#4-A4) and B (D4-F#4-A4).

55

Musical staff 55-58 in treble clef, key of D major. Staff 55 starts with F#m (D4-F#4-A4) and B (D4-F#4-A4). Staff 56-58 continue with various chords and melodic lines, including F#m and B.

Bridge

59

Musical staff 59-66 in treble clef, key of D major. Staff 59 starts with A (D4-F#4-A4) and G#m (D4-F#4-A4). Staff 60-66 continue with various chords and melodic lines, including A, G#m, C#m (D4-F#4-A4), E (D4-F#4-A4), B (D4-F#4-A4), and A.

67

Musical staff 67-70 in treble clef, key of D major. Staff 67 starts with A (D4-F#4-A4) and G#m (D4-F#4-A4). Staff 68-70 continue with various chords and melodic lines, including A and G#m.

71

Musical staff 71-72 in treble clef, key of D major. Staff 71 starts with C#m (D4-F#4-A4) and E (D4-F#4-A4). Staff 72 continues with various chords and melodic lines, including C#m, E, B (D4-F#4-A4), and A.

73

Musical staff 73-76 in treble clef, key of D major. Staff 73 starts with A (D4-F#4-A4) and G#m (D4-F#4-A4). Staff 74-76 continue with various chords and melodic lines, including A and G#m.

77

Musical staff 77-80 in treble clef, key of D major. Staff 77 starts with C#m (D4-F#4-A4) and A (D4-F#4-A4). Staff 78-80 continue with various chords and melodic lines, including C#m and A.

81

G#m G#m B

2

Instrumental Chorus

85

E C#m

89

F#m B

93

E C#m

97

F#m B

6 E C#m

101

P.M.-----|

F#m B

105

Outro

E C#m

109

F#m B

113

E C#m F#m

117

B Emaj7

122